



Mainsoft SharePoint Integrator for Lotus Notes

“By integrating Lotus Notes with SharePoint and our Sametime-based unified communications platform, we can meet all of our document collaboration and communication needs in a single application.”

Scott Marchione,
Applications Developer,
Kawasaki Robotics

To rise to the current economic challenge, businesses are investing strategically in collaboration software to improve teams’ execution speed and reduce operating costs. However, many Lotus Notes® and Lotus Sametime® customers struggle to implement their collaboration strategy because they rely on Microsoft® SharePoint® for team collaboration and document management. SharePoint is the natural back-end of Microsoft Office®. It delivers a tight integration with Microsoft Word®, Excel®, and PowerPoint®, and it provides a unified approach for business users to share and collaborate on Office files. However, accessing and updating SharePoint document libraries within Lotus Notes is a tedious process. The separation between personal and shared spaces impedes team collaboration and slows business users’ productivity.

Mainsoft® SharePoint Integrator for Lotus Notes eliminates this IT barrier by integrating Lotus Notes, Lotus Sametime, and SharePoint into a unified messaging and collaboration platform.

Mainsoft SharePoint Integrator for Lotus Notes v2.0

Mainsoft SharePoint Integrator for Lotus Notes is easy-to-deploy, client-side software that drives Lotus Notes users’ adoption of SharePoint for managing and sharing emails and attachments. Users can easily drag documents and emails from a Lotus Notes sidebar to SharePoint, and from SharePoint to Lotus Notes and Sametime. The new release introduces support for Lotus Notes 8.5, including SharePoint calendar integration; user-friendly enforcement of the SharePoint taxonomy and IT governance; and Microsoft SharePoint Online.

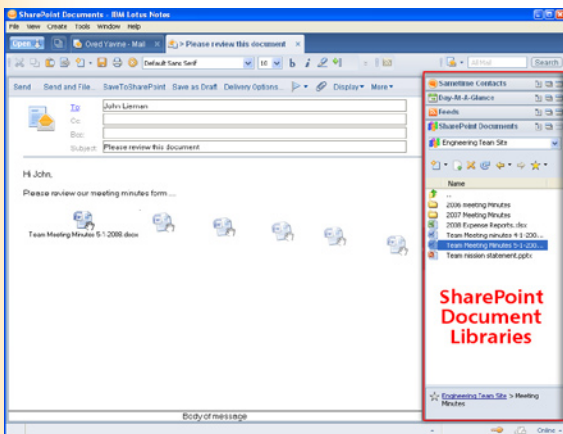
Cost Savings

Mainsoft enables businesses to achieve these strategic collaboration objectives while aggressively managing expenses. In fact, SharePoint-Lotus software coexistence costs 1/10th the cost of a typical email migration. Customers can also save email storage costs by promoting the use of document links in outgoing email messages rather than saving duplicate documents on one or more Domino® servers. Finally, Mainsoft connects to Microsoft SharePoint Online and other hosted options, supporting customers that choose to reduce on-premise SharePoint server costs.

Product Features

Mainsoft SharePoint Integrator is available as an add-on for Lotus Notes 8.x and as a rich, standalone client that docks to Lotus Notes 8.x (Basic Configuration), 7.x, and 6.5.x. Both user interface options deliver an intuitive experience on SharePoint for Lotus Notes users. They can easily:

- **Navigate one or more SharePoint sites** from a rich client interface. Users can quickly locate content using site favorites, back/forward navigation buttons, and search. Single sign-on is also supported.
- **Drag-and-drop SharePoint documents** and document links to Lotus Notes applications, including emails, calendars, Lotus Connections Activities, and team rooms.
- **Initiate a Sametime chat** with the author, most recent editor, or person who has checked out a SharePoint document, and drag document links to the Sametime chat window.
- **Publish documents on SharePoint.** Drag attachments to SharePoint, and then check in, check out, and view documents’ version history from Lotus Notes. Users can also view and edit the SharePoint document properties from Lotus Notes for all standard metadata types.
- **Easily adopt the SharePoint taxonomy.** Lotus Notes users are prompted to check in documents they have checked out, as well as fill in required document properties for documents they upload on SharePoint.



Drag a SharePoint document or document link to a Lotus Notes email.

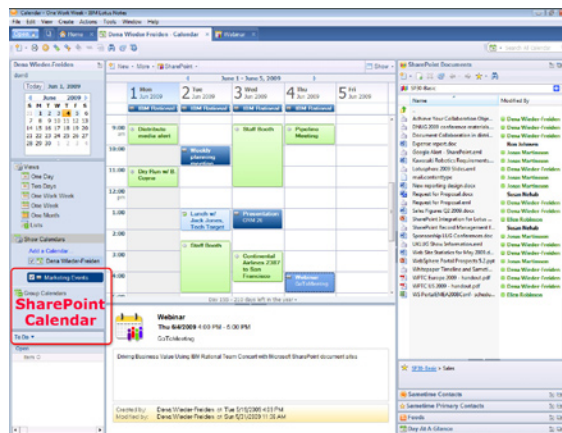
- **Replace attachments with links in outgoing messages.** Using the SharePoint button, a business user can publish attachments on SharePoint and send a link in place of an attachment in outgoing emails. The Domino administrator can provision the default setting, either prompting the user to save an attachment on SharePoint and send a link, or to save attachments on SharePoint automatically in a location designated by the user.

- **Publish Lotus Notes emails on SharePoint.** Email body, header, and attachments are stored as a single, compound document on SharePoint. Email headers are automatically mapped to SharePoint metadata as the email is stored, improving content management and making it easy to create an email-friendly view on SharePoint. Users can search emails stored on SharePoint from both the Lotus Notes sidebar and the SharePoint Web interface.





- ✎ **Access email stored on SharePoint** in their native Lotus Notes format. Users can open, edit, and forward emails, regardless of whether or not they received the emails directly. Extranet users can view Lotus Notes emails from their browser, including access to the attachments.
- ✎ **Access and update SharePoint team events** from the Lotus Notes 8.5 calendar application. Users can manage their time from a single, integrated calendar view, with personal appointments and team events color-coded for easy identification. Lotus Notes users can edit event details, delete an existing team event, or create new ones. This information is copied to SharePoint, ensuring team calendars are kept up-to-date, without requiring the user to re-enter appointment details. Users can also use Lotus Notes to invite people to attend a team event and view SharePoint team appointments when offline.



Access SharePoint events inside the Lotus Notes calendar application.

- ✎ **Use business mashups that integrate SharePoint content.** Mainsoft SharePoint-Java™ interoperability experts can integrate data and business logic from disparate systems – SharePoint, Lotus Notes, Domino, and Java applications – to deliver a more productive work environment and an integrated view into business performance. Existing systems can be used within business processes, without the cost and expense of recoding each on a common platform.

“Mainsoft SharePoint Integrator for Lotus Notes enables our team to collaborate more efficiently on documents, and with a high degree of confidence they have all relevant correspondence at their fingertips.”

Frédéric Guinet,
Director of IT,
French Banking Federation

Centralized Provisioning

Mainsoft SharePoint Integrator is easy to install and manage. The Domino administrator can use the Widget Catalog to provision the SharePoint Integrator plug-in to Lotus Notes users as well as user policies to provision SharePoint sites and preferences. In addition, the software does not require any modifications to the SharePoint Server infrastructure.

Plug into the Microsoft Cloud

Mainsoft supports Microsoft SharePoint Online, as well as hosted solutions for Windows® SharePoint Services (WSS) 3.0 and Office SharePoint Server (MOSS) 2007. Asynchronous drag-and-drop operations ensure that the Lotus Notes application remains responsive when the Lotus Notes user accesses or stores large documents. Additional enhancements, such as caching favorites and last visited folder contents, will be supported in future releases.

Custom Integrations

Contact [Mainsoft](#) for additional integrations between SharePoint and Lotus, such as the integration of SharePoint document libraries with Lotus Connections; Lotus Notes integration with MOSS user profiles; offline access to SharePoint document libraries; and more.

System Requirements

- ✎ Lotus Notes v8.5.x, 8.0.x, 7.0.x, or 6.5.x
- ✎ Lotus Sametime v8.x
- ✎ Windows SharePoint Services (WSS) version 3, Office SharePoint Server (MOSS) 2007, or Microsoft SharePoint Online

About Mainsoft

Mainsoft develops software and solutions that integrate Microsoft technologies, specifically SharePoint and .NET applications, into Java-based middleware such as IBM Lotus Notes, Lotus Sametime, WebSphere® Portal, WebSphere Application Server, Rational® Jazz, and Apache Tomcat. Currently, more than 150 enterprises and ISVs use Mainsoft software and solutions to deliver seamlessly integrated platforms. For more information, visit www.mainsoft.com.

Mainsoft Corporation

698 Tasman Drive • Milpitas, CA 95035
phone: 1-800-624-6946 or 408-907-1339 • fax 408-351-4984
www.mainsoft.com

© Copyright 2009 Mainsoft Corporation.

All trademarks, trade names, service marks, and logos referenced herein belong to their respective companies.

